

APPLICATION :

HS/FS ring elements owing to their convenient shape & sizes, adapt themselves readily to variety of machines and appliances for which other types of heaters are not suitable. They are being fitted for heating platens, dies of presses. They are in use for melting of glue, wax, easily fusible metals like lead, tin, solder, hot plates, popcorn machines, high speed packing machines, diffusion pumps, kettles, large coffee percolators & wash boilers etc.



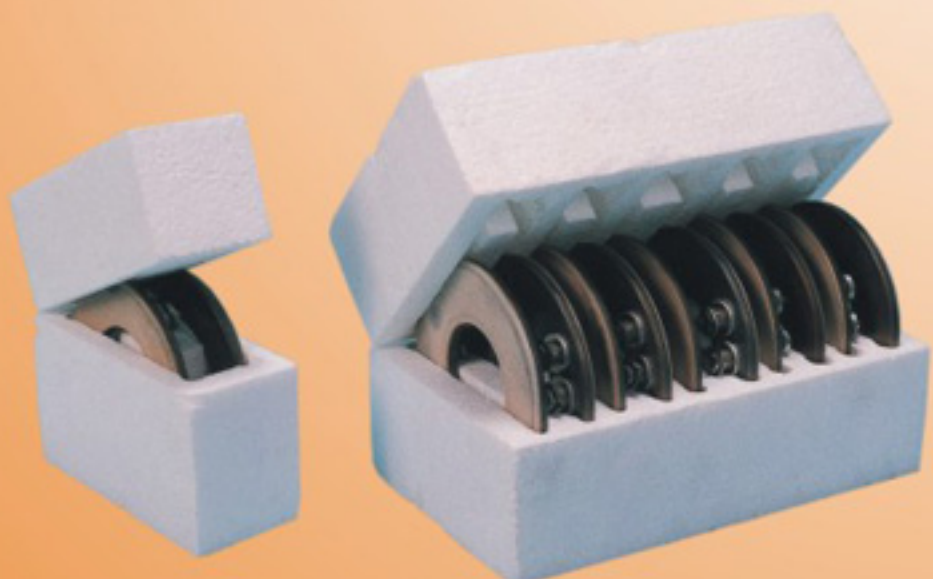
CONSTRUCTION :

Chrome steel sheath on one side and edges, other flat side is the bare refractory. Coiled electric resistant wire embedded inside. And steel terminal studs with nuts and washers.

ADVANTAGE :

Being sheathed on one side only, it has very little residual heat and stands up to 650 Deg. C. Temperature for its surface area.

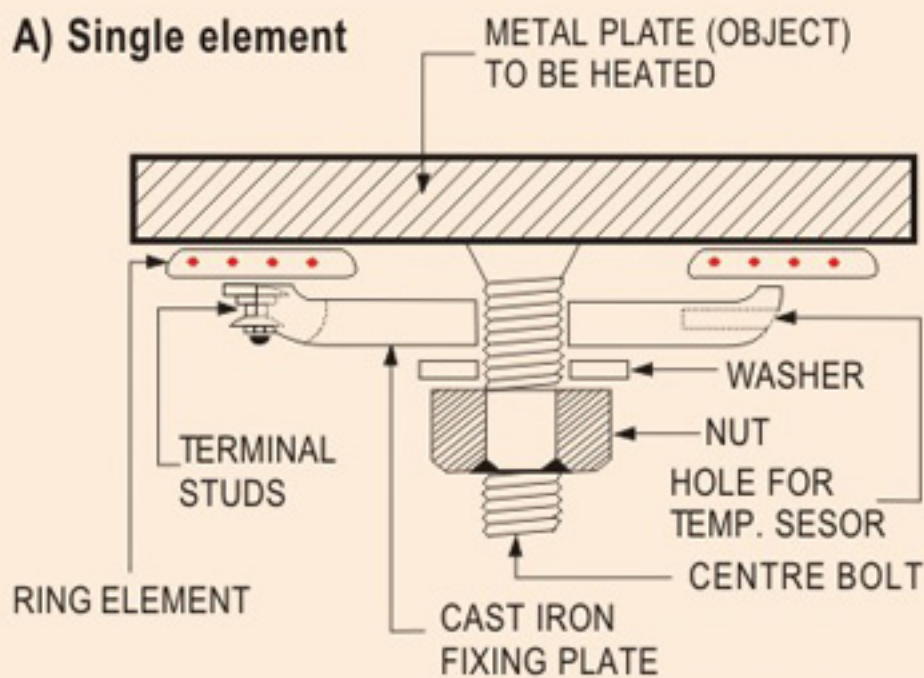
**HALF &
FULLY
SHEATHED
RING
HEATERS**



Available in Standard packing & contains two or ten pieces

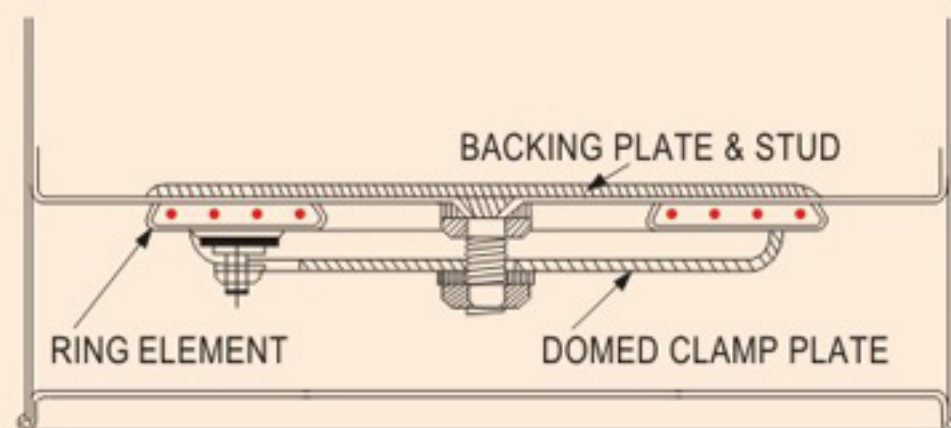
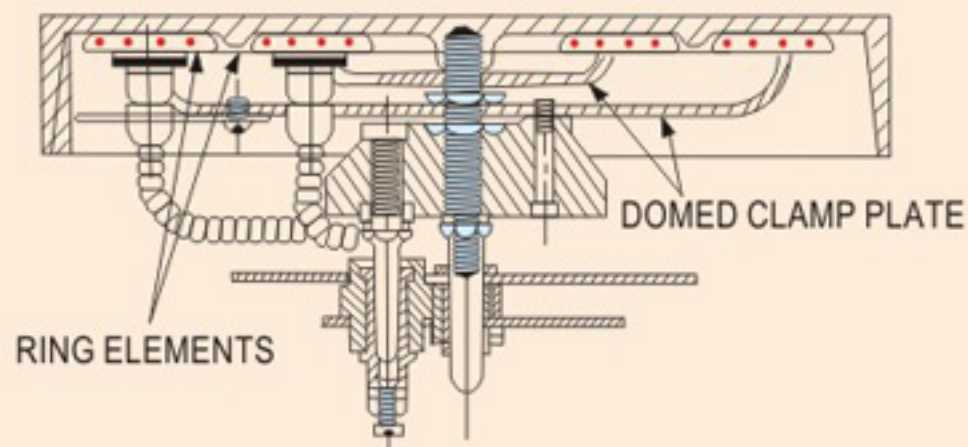
METHODS OF MOUNTING HS/FS RING HEATERS :

A) Single element



If the utensil is having thick bottom, The mounting of the element is very simple. A centre bolt & a concave fixing plate alone being necessary, as shown.

B) Double elements



If the utensil bottom is thin, we suggest to strengthen it by means of brass / SS backing plates which makes one piece with the fixing bolt mounted as shown.

STANDARD SIZES & CAPACITIES :

TYPES	MAX WATTAGES AT 230 / 250 VOLTS	DIMENSIONS (in mm)			
		RING INSIDE DIA. Half sheathed (HS)	Fully sheathed (FS)	RING OUTSIDE DIA. Half sheathed (HS)	Fully sheathed (FS)
HS / FS - 1	350	27	25	88	90
HS / FS - 2	400	50	48	100	102
HS / FS - 3	500	50	48	111	112
HS / FS - 4	1000	62	60	134	136
HS / FS - 6	1250	90	88	160	161
HS / FS - 7	1300	113	111	178	180
HS / FS - 8	1600	129	126	201	203
HS / FS - 9	1750	152	151	218	220
HS / FS - 10	2000	225	223	300	302

- ◆ HS -1 have 4BA thread terminal studs, and all other types are with 2BA thread studs.
- ◆ Heater is not recommended for direct immersion in liquid.
- ◆ Heater with different Wattage/Voltage can also be made.
- ◆ These Heaters can be used one inside the other in following manners.

TYPES	TO GIVE TOTAL LOADING OF	ON A UTENSIL DIA.
HS-10 + HS-9 & HS-4	4750 WATTS	305 MM
HS-9 + HS-4	2750 WATTS	220 MM
HS-8 + HS-3	2100 WATTS	202 MM
HS-7 + HS-3	1800 WATTS	180 MM
HS-6 + HS-1	1600 WATTS	162 MM

This Combination is also available in Fully Sheathed (FS) Heaters